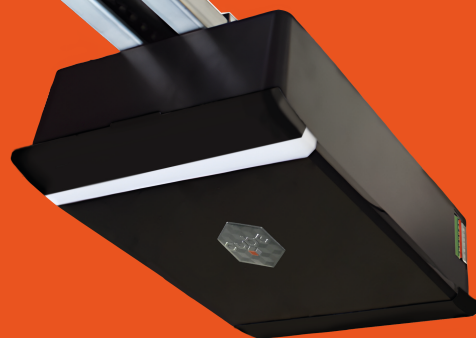




CUBE 1100N

NEW MOTOR FOR
GARAGE DOORS



Soft-start and
Soft-close
function



Automatic
closing setting



Opening and
closing speed
setting



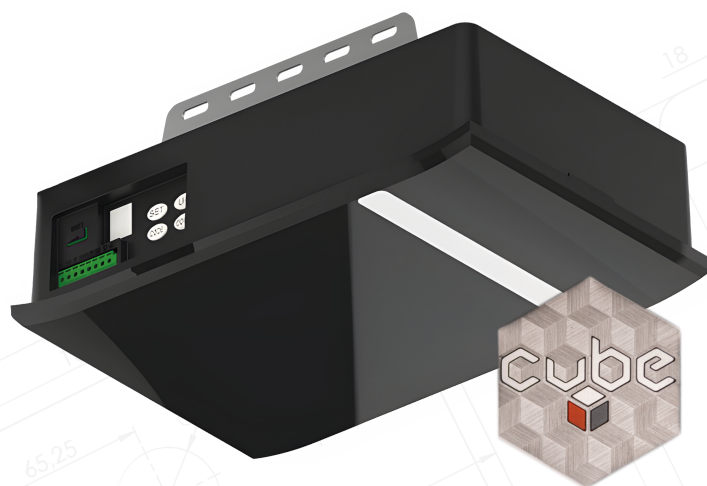
Obstacle detection

KEY FEATURES

- Max. doorleaf area 11 m²
- Elegant black cover-design
- Transformer overload protection
- Programmable LED light

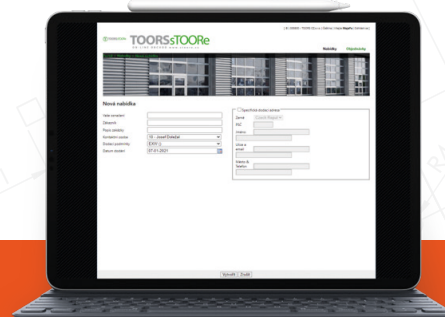


Take a look at our [video](#)
of the motor and its
accessories



Remote controls

- Two remote controls included in the basic package
- 868 MHz frequency with floating code



Online door
configurator
www.sTOORe.cz

Parameters	CUBE 1100N
Power voltage	230V 50-60 Hz
Max. tractive force	1100 N
Max. doorleaf area	11 m ²
Max. doorleaf weight	130 kg
Opening/closing speed	180 mm/s
LED light	24V / 15 pcs LED diod
Limit switches	Electronic
Transformer	Overload protection
Radio frequency	868,35 MHz
Coding type	Floating code
Remote with status indication	Four-channel
Capacity of reciever memory	50 remote controlls
LED beacon connection	Yes
Working temp. range	-40 °C up to +50 °C
IP code	IP20



STEELTRACK WITH TOOTHED BELT

- Material made of massive galvanized steel
- Enhanced rigidity by profiling
- Easy assembly

Steeltrack lenght	Max. doorleaf height
3500 mm	2500 mm
4000 mm	3000 mm

ACCESSORIES

The motor package includes a complete mounting kit for easy assembly.

